

Container Tracking for SYSPRO



The Container Tracking Module provides visibility across the complex supply chain for companies who deal internationally, import goods for distribution, or import raw materials for use in the manufacturing process.

This solution helps monitor, manage and track shipments via air, land and while at sea, so businesses can stay abreast of inventory even before it reaches the warehouse. For increased control, CTM allows companies to leverage flexible shipment and container building by weight or volume. The system makes it easy to track and manage multiple purchase orders and shipments for fewer container loads and vessels, saving the organization time and money. Companies gain even more efficiency by tracking from supply chain source through final destination and taking ownership as soon as the container is closed.

The Container Tracking Module consists of three functional areas:

- Release matrix
- Container management
- Voyage management

Part 1 – Release matrix

Upon receipt of the advance shipment notice from the supplier or manufacturer, the release matrix provides visibility into all purchase orders by lines that are awaiting shipment. Items can be selected in full or partial quantity with the option to change order quantities. Each release has expected dates, as well as expected departure and arrival ports.

Open Purchase Orders Lines Review						
include options						
information						
lines available for release						
Release PO lines for shipping + Select all PO lines - Unselect all PO lines						
Purchase Dr...	PO Line	Stock code	Stock description	Quantity on ...	Quantity rec...	Quantity out
000381	1 A100	15	Speed Mountain Bike Boys	1,000.000...	0.000000	1,000.000
000381	2 A101	15	Speed Mountain Bike Girls	1,000.000...	0.000000	1,000.000
000381	3 A102	15	Speed Mountain Bike Ladies	1,000.000...	0.000000	1,000.000
000383	1 A100	15	Speed Mountain Bike Boys	1,000.000...	0.000000	1,000.000
000383	2 A101	15	Speed Mountain Bike Girls	1,000.000...	0.000000	1,000.000
000383	3 A102	15	Speed Mountain Bike Ladies	1,000.000...	0.000000	1,000.000
000385	2 A201		Bicycle Chain and Lock	1,000.000...	0.000000	1,000.000
000387	1 A200		Bicycle Pump	1,000.000...	0.000000	1,000.000
000387	2 A201		Bicycle Chain and Lock	1,000.000...	0.000000	1,000.000
Count:133						
based for shipping PO lines						
remove released PO lines + Select all released PO lines - Unselect all released PO lines						
Purchase ...	PO Line	Stock code	Stock description	Quantity on...	Quantity re...	Quantity lo...
000313	28 PC205		Green Paint for Fence	200.0000...	0.000000	0.000000
000313	29 PC209		White Paint for Fence	200.0000...	0.000000	0.000000
000313	30 PC208		Thinners	200.0000...	0.000000	0.000000
Count:3						

Container Tracking for SYSPRO

SOLUTION FACTSHEET



Part 2 – Container management

The container management functionality is used to consolidate purchase releases or transfer order releases into a container where the basic shipping details, such as arrival and departure ports, are the same. Single releases can be split across multiple containers, thereby allowing the company to avoid creating new shipment voyages for larger shipments. It also allows the company to maximize container usage regardless of product. Multiple releases and orders can be combined into a single container.

Containers can be saved as "open" or "closed." Once a container is closed, it can be added to an actual voyage.

The screenshot displays the SYSPRO Container Management interface. The top section shows container details for container number 000000000003975, including origin (HKG35060153), received status, and various dimensions. The bottom section shows a list of selected lines with columns for Purchase order, Sales order, Line, Due date, Stock code, and Description. The interface also includes a 'Transferred Orders' tab and a 'Count' field.

Purchase order	Sales order	Line	Due date	Stock code	Description
011680	020128	1	06/18/2015	000000000118434	CAP
011680	020128	10	06/18/2015	000000000118435	VIAL

Container Tracking for SYSPRO

SOLUTION FACTSHEET



Part 3 – Voyage management

The voyage tracking management allows multiple containers to be combined into a single voyage or shipment number and allows disposition at either the container or detail line level. The voyage information can be road, rail, air or ocean, and the organization can disposition the voyage as requiring a customs quarantine or hold.

Managing all of the elements associated with the supply chain source can be a time consuming function. Voyage management provides organizations with the ability to track all from one centralized view.

Analysis of data can provide charting element costs, elapsed time to port, number of containers shipped, number of units per month, less than or full containers and vendor performance. This information can be filtered by port of origin, shipper, port of arrival, or time frame in addition to other elements.

The screenshot displays the 'Voyage Management' software interface. At the top, there's a header bar with the title 'Voyage Management'. Below it, a search bar shows 'Voyage: 000000000003526'. The main area is divided into several sections:

- Details:** A section on the left with a tree view showing 'Information' and 'Details'. The 'Details' section is expanded, showing various fields like 'Voyage number', 'Voyage name', 'Voyage description', 'Voyage type', 'Voyage status', 'Voyage origin', 'Voyage destination', 'Voyage departure', and 'Voyage arrival'.
- Loaded containers:** A section on the right showing a table of loaded containers. The table has columns for 'Container', 'Description', 'Capacity', 'Capacity used', and 'Inside length'. Two containers are listed: '000000000003982' (TCLU2158164) and '000000000003983' (FSCU8112813).
- Voyage notes:** A section below the loaded containers showing a list of notes.
- Table:** A large table at the bottom showing voyage data. The table has columns for 'PO Line', 'Sales order', 'Line', 'Due date', 'Stock code', 'Description', 'Quantity', 'Cartons', 'Capacity', 'Supplier', and 'Supplier name'. The first row shows '1', '019359', '1', '02/05/2015', '000000000115...', 'BEAUTY 360 6...', '8568.000000', '119', '8.289', 'YAU', and 'BEAUTY YAU...'. The table is highlighted with a pink background.

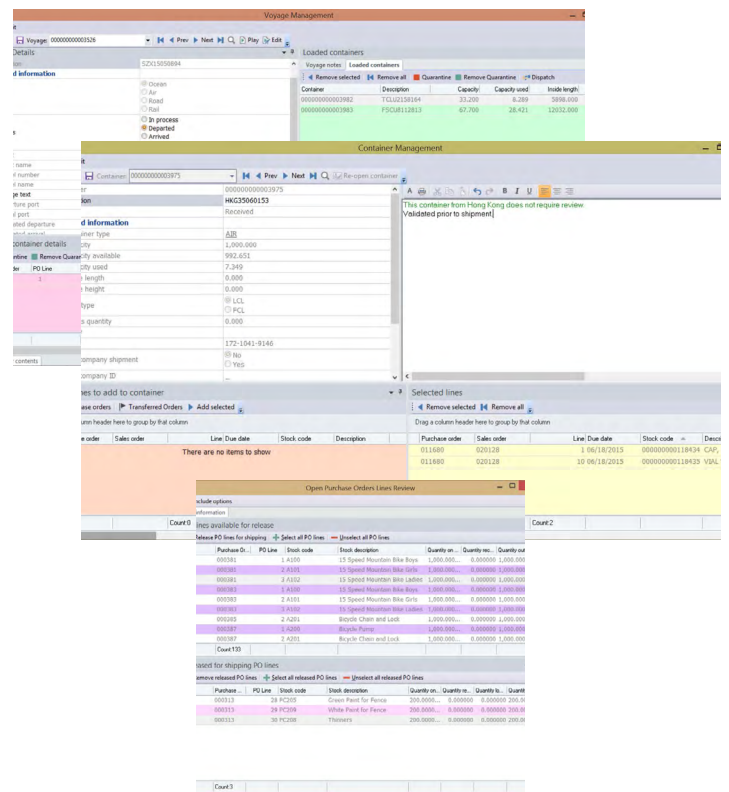
Container Tracking for SYSPRO

SOLUTION FACTSHEET



The benefits of Container Tracking for SYSPRO

- Shipment tracking at order line level or in summary allows information to be analyzed for strategic or operational decision making.
- Because of long lead times, knowledge of where inventory is and when it is expected improve ontime delivery and full shipment delivery.
- Knowing where goods are, where they came from. Early detection of delays helps improve customer service < recording departure and arrival city information allows for the analysis of product origin and location of the greater demand.
- Vendor performance measurement- knowing when containers actually ship and measurements against vendor promised shipment dates.
- System allows the setup of landed cost elements, while at the same time, considering FOB shipments. This allows users to know what landed cost elements contribute to standard costs.
- Better communication and reduced mistakes of information between different departments in different locations.
- Having the shipping and the financial data in a single enterprise solution ensures a single source of the truth.



For more information, contact us at:

Tel: 714.437.1000

Email: info@us.syspro.com

